

Yamaha Big Bear 400 4x4

2007- up
Kit No. XTY405

Read these instructions carefully. Xtreme recommends, a professional mechanic perform the installation. Care should be taken to follow all standard safety procedures.

A thorough inspection of the suspension should be made prior to performing the installation. Any worn, bent or broken parts should be replaced. After installation another inspection should be made, checking for loose components or missing hardware. Inspect, again after eight hours of operation.

To begin, check to make sure all components and necessary tools are on hand.

Components:

The kit consists of three bags containing Hardware and Brackets.

Bag #1 for the Left Front

Bag #2 for the Right Front

Bag #3 for the Rear

Disassembly / Installation Procedure

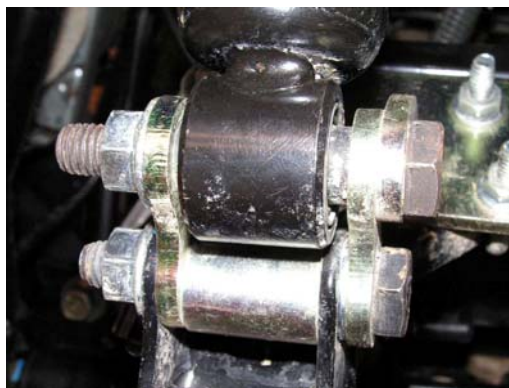
1.)Begin by loosening the lug nuts on both front tires. Raise the unit, using a suitable lifting device or procedure, until the front tires are off the ground. If using a floor jack with stands, chock the rear wheels to prevent the unit from rolling. If using jack stands, make sure the stands are placed under the frame and not the body. Make sure the unit is **stable and secure**.

2.)Remove the tires / wheels.

NOTE: *Now is a good time to check the threads on the lug studs. Check for rust, pulled threads or other deterioration that could cause a stud/thread failure.*

3.)Remove contents from Bag #1. We will start on the drivers (left) side at the front of the bike. Remove the wheel and the bottom bolt holding the shock to the control arm. Take one of the 10x60mm bolts and insert it through one of the shock extensions. (They are sometimes referred to as "dog bones".) Next slide the 10mm flat washer onto the bolt and insert it into the factory shock mount from back to front. Insert the sleeve (bushing) furnished where the stock shock mounted. Push the bolt thru the stock mount, slip the other extension onto the bolt and install one of the flange nuts. Do not tighten any bolts yet. See image #1 and #2

4.)Repeat these steps for the Right Front and Bag #2



Rear

5.)Begin raise the unit, using a suitable lifting device or procedure, until the rear of the bike is off the ground. If using a floor jack with stands, chock the front wheels to prevent the unit from rolling. If using jack stands, make sure the stands are placed under the frame and not the body. Make sure it is **stable and secure** you will need to be able to lower the rear axle without the rest of the bike moving.

6.)Assembly of Bag #3. It is not necessary for the wheels to be removed for the rear brackets but you may find it easier with the wheels removed.

Take the top shock bolts out and pull the shocks out away from the bike.

NOTE: Take the two long rear brackets and look closely at them one of the inner holes is slightly elongated. (Slotted). Try to put both of these holes on the same side.

7.)Take one of the 10x60mm bolts and insert it thru the bracket on the inner hole on one end. Hold the sleeve in place at the factory mount. Go thru the sleeve and out the front of the factory bracket. (You may install these bolt front to rear or rear to front.) Install one of the 10mm flange nuts. Take one of the bolts go thru the other side, installing the sleeve as you did on the other side. Check Image #3.

Take another bolt and go thru the bracket and then install one of the thick washers. Go thru the shock install another washer and thru the other bracket. Repeat on the other side.

See Image #4 and Image #5.



8.) A good “Anti-Seize” compound should be applied to the lug studs and the tire/wheel combination of choice installed. Remove all jacks, jack stands and other devices used to lift and hold the bike. Check all brackets and bolts to be sure everything is tight.

WARRANTY: This kit will be warranted against defects in workmanship and materials ONLY. Problems from misuse, improper installation or abuse are not covered in the warranty. This warranty is good for one year (12 months) form date of purchase. All warranty claims MUST be accompanied by the original receipt or suitable proof of purchase date.